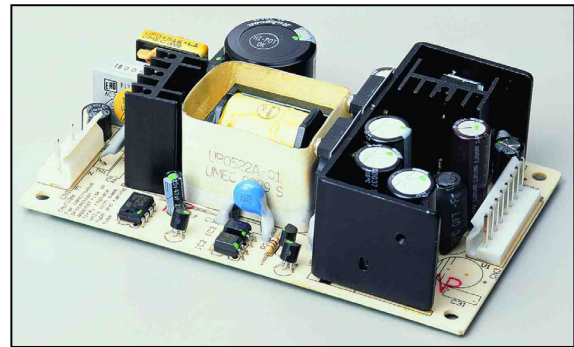


# UP0452A-( ) ( ) ( I )

## 45 Watt Open Frame Switchers

- ◆ Universal Input 90 to 264 VAC
- ◆ EMI Meets FCC/CISPR 22 Class B



### SPECIFICATIONS

All specifications are typical at nominal line, full load and 25°C unless otherwise noted.

### INPUT SPECIFICATIONS

Input Voltage Range ..... 90-264VAC  
Input Frequency ..... 47-63 Hz  
Inrush Current ..... 40A max.(Cold Start)

### GENERAL SPECIFICATIONS

Hold-up Time ..... 10mS typ.  
Efficiency ..... 70% typ.  
Leakage Current ..... 3.5mA max.  
Short Circuit Protection ..... Continuous  
Overvoltage Protection ..... dual output  
Continuous Output Power ..... 45W max.  
Hi-pot Isolation: Input / Output ..... 4242 VDC

### ENVIRONMENTAL SPECIFICATIONS

Operating Temperature Range ..... 0°C to 70°C  
Derating 50°C to 70°C ..... 2%/°C  
Temperature Coefficient ..... ±0.02%/°C  
Storage Temperature Range ..... -40°C to +85°C  
Humidity, Non-Condensing ..... 0 to 95% RH  
Cooling ..... Free- Air Convection  
EMI ..... Meets FCC/CISPR 22 Class B Specification



**UNIVERSAL  
MICROELECTRONICS**

3,27TH RD., TAICHUNG INDUSTRIAL PARK,  
TAICHUNG, TAIWAN, R.O.C.  
TEL: 886-4-23590096 FAX: 886-4-23590129

## OUTPUT SPECIFICATIONS

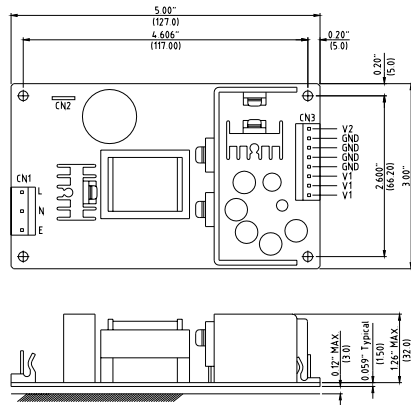
Model Number	Output Voltage (Volts)	Output Current (Amps)		Peak <sup>1</sup> (Amps)	Ripple <sup>2</sup> P-P (mV)	Total Regulation <sup>3</sup>
		Min.	Rated			
<b>UP0452A-01(I)</b>	+3.3V (V1) +5V (V2)	1.5 0	12 1	14.4 1.2	50 50	±3% ±5%

### NOTES:

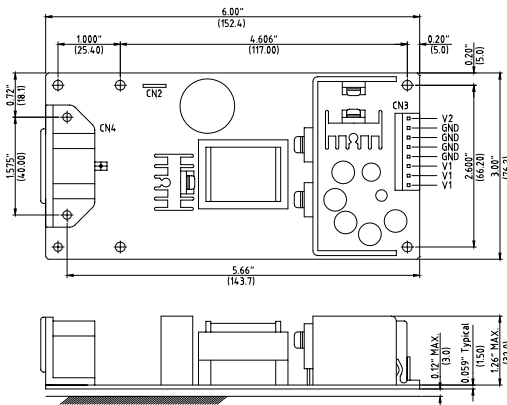
1. Peak output current lasting less than one minute with duty factor less than 5%. During peak loading voltage may exceed regulation limits.
2. Add a 0.1uF ceramic capacitor and a 10uF E.L. capacitor to the output cable. Peak to peak and RMS metering equipment shall have a 20 MHz response with probes and cables maintaining frequency response from 200 Hz to 100MHz bandwidth. Output ripple and spikes are measured directly at the output terminals of the power supply without the use of the probe ground clip.
3. Total regulation is defined as the static output regulation at 25°C, including initial tolerance, line voltage within stated limits, but when V1 is maximum load and V2 is ≤ 1/10 maximum load, the total regulation will be ±10%. V1 must have a minimum of 10% maximum load, for V3 to supply maximum load.

## PHYSICAL SPECIFICATIONS

UP0452A-01



UP0452A-011



Pin	Input voltage
L&N	90-264 VAC
UP0452A-XX	UP0452A-XXI
CN1 input connector Molex 09-65-2058 with second and fourth pin removed	INALWAYS-0714-2 PCB mounting
Molex mating connector Molex 5195 series housing with 5194 series crimp terminals	

CN3 output connector Molex pin 09-65-2088	
Model	
Pin	UP0452A-01(I)
1	+5V
2	Common
3	
4	
5	
6	+3.3V
7	
8	
Molex mating connector Molex 5195 series housing with 5194 series crimp terminals	

CN2(option)input ground tab, tab size 4.8*0.5 (mm)
With receptacle for 4.8*0.5 (mm) tab.

### NOTES:

1. All dimensions in inches (mm)
2. Tolerance .XX=±0.05, .XXX=±0.020



**UNIVERSAL  
MICROELECTRONICS**

3,27TH RD., TAICHUNG INDUSTRIAL PARK,  
TAICHUNG, TAIWAN, R.O.C.  
TEL: 886-4-23590096 FAX: 886-4-23590129